



*MINISTRY OF  
MINES, INDUSTRY  
& TECHNOLOGICAL  
DEVELOPMENT*

*CAMEROON  
EXPLORATION  
INDUSTRY:  
OPPORTUNITIES AND  
PERSPECTIVES*

*By Hon.  
MINISTER  
Emmanuel BONDE  
PDAC Toronto March  
2014*

**ONGOING AEROMAGNETIC &  
RADIOMETRIC AIRBORNE SURVEY**

# CONTENT



**EXPLORATION INDUSTRY  
BACKGROUND**



**SOME ONGOING PROJECTS**



**GEOPHYSICAL AIRBORNE  
SURVEY**



**PERSPECTIVES**





## INDUSTRY BACKGROUND

- ❖ Intensive exploration launched in 2005 by mining companies;
- ❖ Mining law voted in 2001 & amended in 2010;
- ❖ Existence of 225 indices and 17 in rocks and alluvial deposits for many substances (gold, iron, limestone, marble, nickel-cobalt, bauxite...)



# INDUSTRY BACKGROUND (ctd)

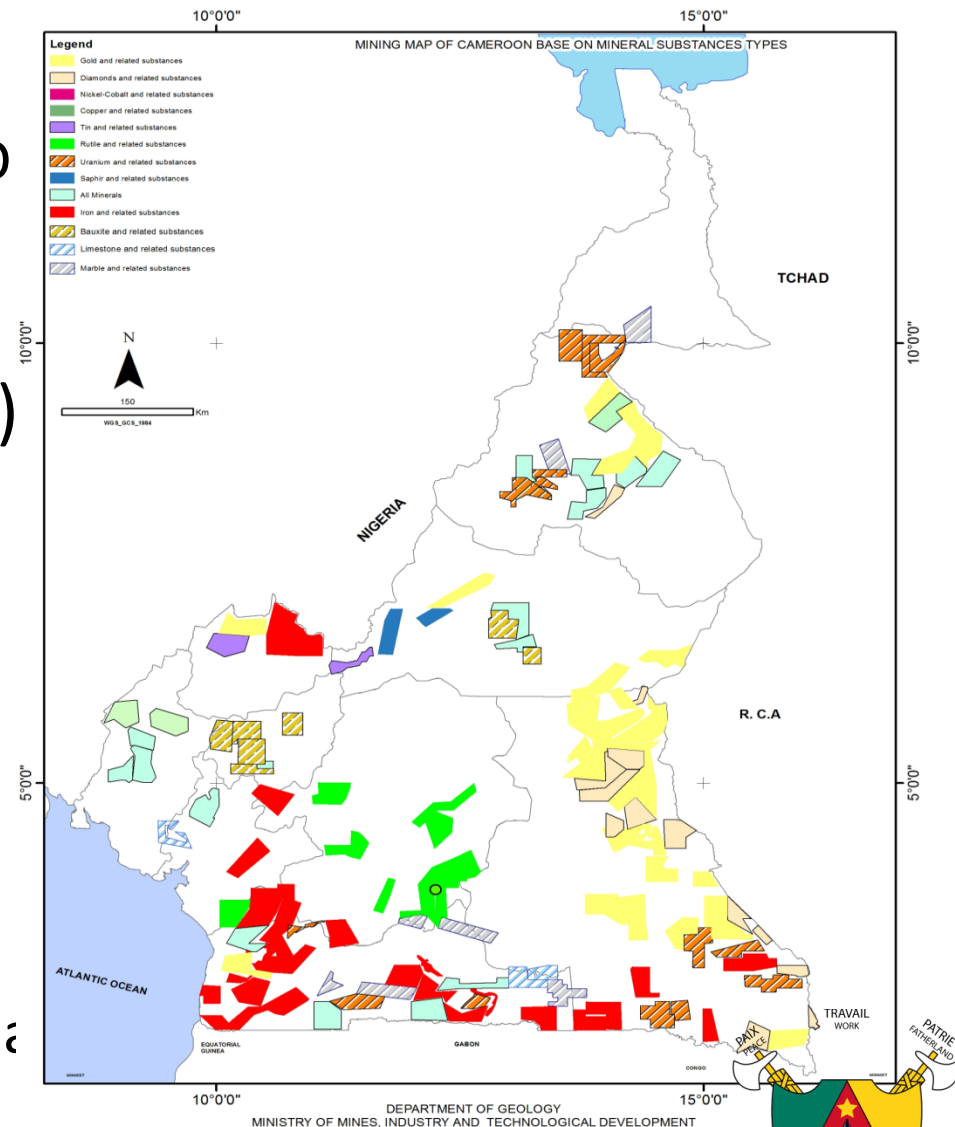
Mineral substances	Research permit	Mining convention	Mining permit
Iron	23	01	
Nickel-Cobalt-Manganese	02	01	01
Bauxite	08		
Uranium	09		
Tin and Wolfram	03		
Gold	61		
Diamond	04	01	01
Precious stones	03		
Tungsten	01		
Rutile end Kyanite	12		
Sapphire	02		
Limestone	03		01
Marble	05		02
O. S & other minerals	09		
<b>Total</b>	<b>145</b>	<b>03</b>	<b>05</b>





# SOME ONGOING PROJECTS

- ✓ Iron in Kribi (SINOSTEELCAM)
- ✓ Nkout-Djougou (CAMINEX-IMIC)
- ✓ Eseké-Ngoyang (CAMINA-LEGEND MINING);
- ✓ Bikoula (AUCAM MINING);
- ✓ Birsoke & Mandoum (AUCAM)
- ✓ Djadom-Binga (CMC/WAFM)
- ✓ Bipindi-Akom 2 (Gstones / Mississauga Mining)
- ✓ Poli, Teubang, Salaki (MegaUranium);
- ✓ Banganté (G-Stones Resources)
- ✓ Mayo Darlé (Daewoo International Cameroon)



## MAMELLES-KRIBI (IRON)

A prefeasibility study shows that the estimated resource is 632.82 Mt, and the annual production at the first phase is 4 Mt/y. the investment during the first phase is estimated to be \$ US 660 million. The Tors of the ESIA is already submitted to the ministry in charge of the environment and the nature protection. the iron is 35% Fe



## NKOUT, NTEM (IRON)

**NKOUT: 35mtpa project  
2.5bnt resource**

**73mt high grade cap  
330km from Kribi port  
Good metallurgy**

**Begun PFS in January  
Chinese consortium in place  
to build infrastructure**

**NTEM: Accelerating to early  
production**

**115mt resource  
Only 80km to Kribi port  
Good metallurgy**

**Drilling to better define ore body  
Investigating slurry pipeline**



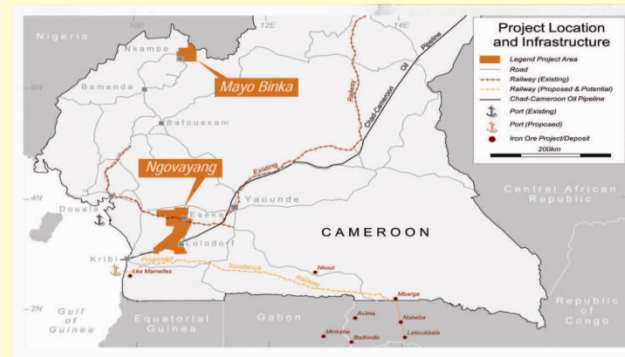
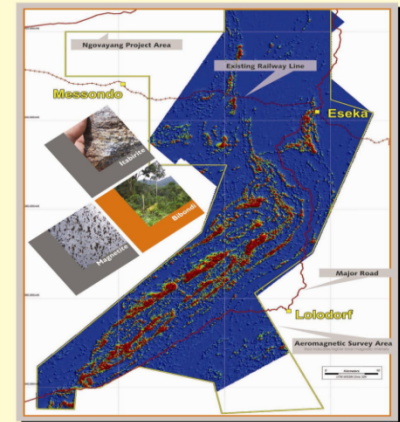


# ESEKA-NGOYANG (IRON)

Transaction between CAMINA-LEGEND MINING with JINDAL STEEL & POWER Ltd is under conclusion to pursue the iron ore project development



- Remote camp fully operating
- Four exploration permits
- Aeromag survey completed in 2010
- 5 000 metres budgeted in 2010/2011
- Four diamond drill rigs purchased
- Scoping study under way
- Four bulldozers fully operational in the field



Web site: [www.legendmining.com](http://www.legendmining.com)  
E-mail: [camina@gmail.com](mailto:camina@gmail.com)

Po Box. 33 057 TRAVAIL  
Yaounde - Cameroon  
Tél: +237 22 06 84 05  
Fax: +237



# BIKOULA (IRON)

BIKOULA project is nearby Nkout-Akon-Djoum. The preliminary analysis from core samples collected from drilling under completion reveals 55.5 to 57.3% Fe.

Many prospects have been identified after an airborne survey and verified by geological mapping on the field.

Drilling completed in 2013 is 7000 LM.



Committed to the responsible development of iron, bauxite and gold resources in Cameroon



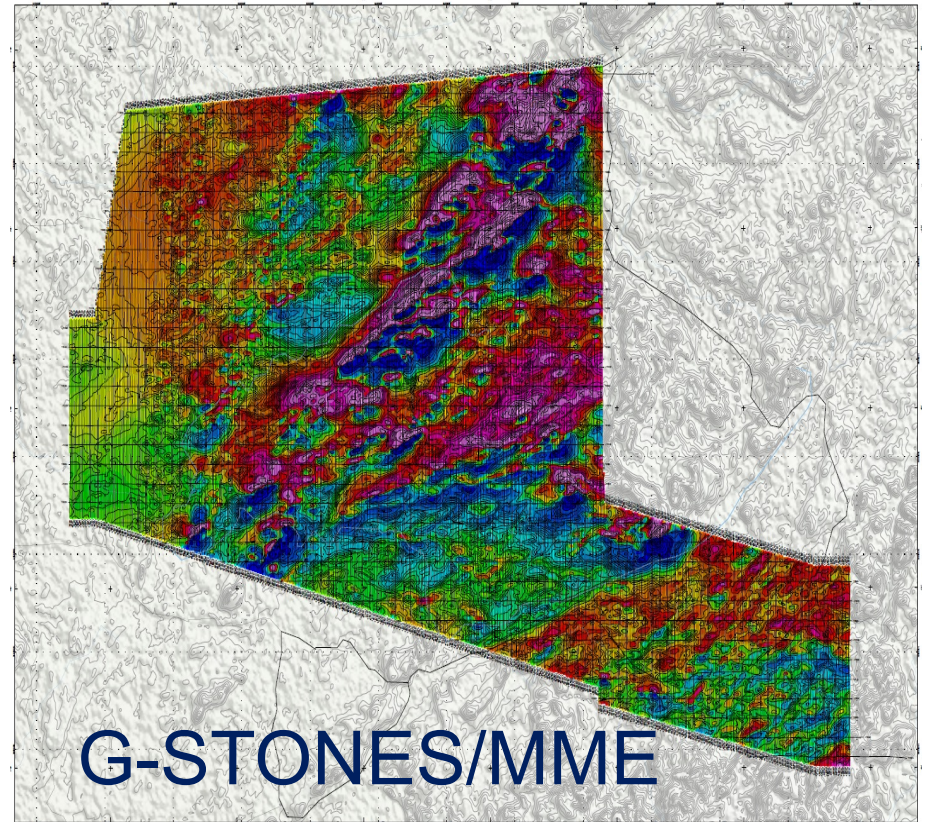
info@aluvance.com  
B. P. 5407, Yaoundé,  
Cameroon





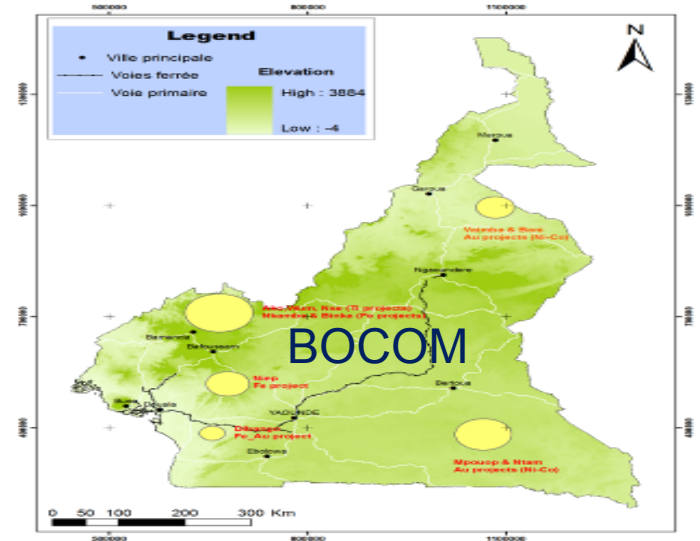
## AKOM 2 (IRON)

- ❑ Analyses reveal 33,8 % to 43,8% Fe
- ❑ Geophysical airborne survey has been done (24 km of anomaly observed)
- ❑ Drilling operations began earlier this year.





# DIBANGO-VAIMBA-BANI-NTAM –MPOUOP (IRON, GOLD)

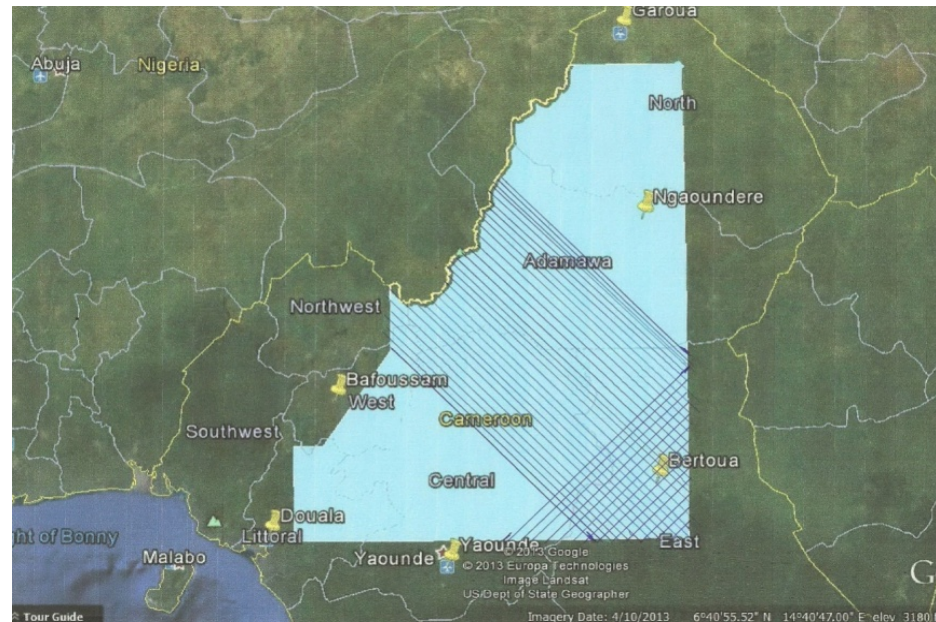


- Airborne surveys have cover the 06 licenses for gold, iron
- Test drilling in Kele Bitjocka (DIBANGO) is done after combining aeromagnetic and groundgeoelectrical surveys
- Rock chips reveals Au up to 4.2 g/t and 0.5Cr\_% @ Mayo Vaimba Prospect



# AIRBORNE GEOPHYSICAL SURVEY

For a sustainable exploration industry, the government has engaged updating the geological and mining information through a geophysical airborne and geological surveys. The geophysical is going on since January 2014. It includes aeromagnetic and radiometric data collection. Three Cessna are currently used in the field.





# AIRBORNE GEOPHYSICAL SURVEY

It covers approximately 20% of the country territory for a total area of 160 000 km<sup>2</sup>.

The flight length is 363 110 Lkm, the interline of flight is 500 m.

The preliminary results will be available by the end of October 2014.

The geological and geochemical mapping that will follow is for 13.5 sheets of 1/200 000.





# PERSPECTIVES

- Legal & regulatory framework are under revision for a better management of exploration activities;
- Installation of new mining cadastre for amelioration of transparency in the licensing process;
- Pursue the geological and mining information updating and facilitate the easy access to investors;



# PERSPECTIVES

- ❑ Certification of gold exportation in order to enhance the tracability;
- ❑ Pursue the assesment in order to set up an entity in charge of following up mining activities operations and the valorization of mining products.







*THANK YOU  
VERY MUCH  
FOR YOUR KIND  
ATTENTION*

