



## MINISTRY OF FORESTRY AND WILDLIFE

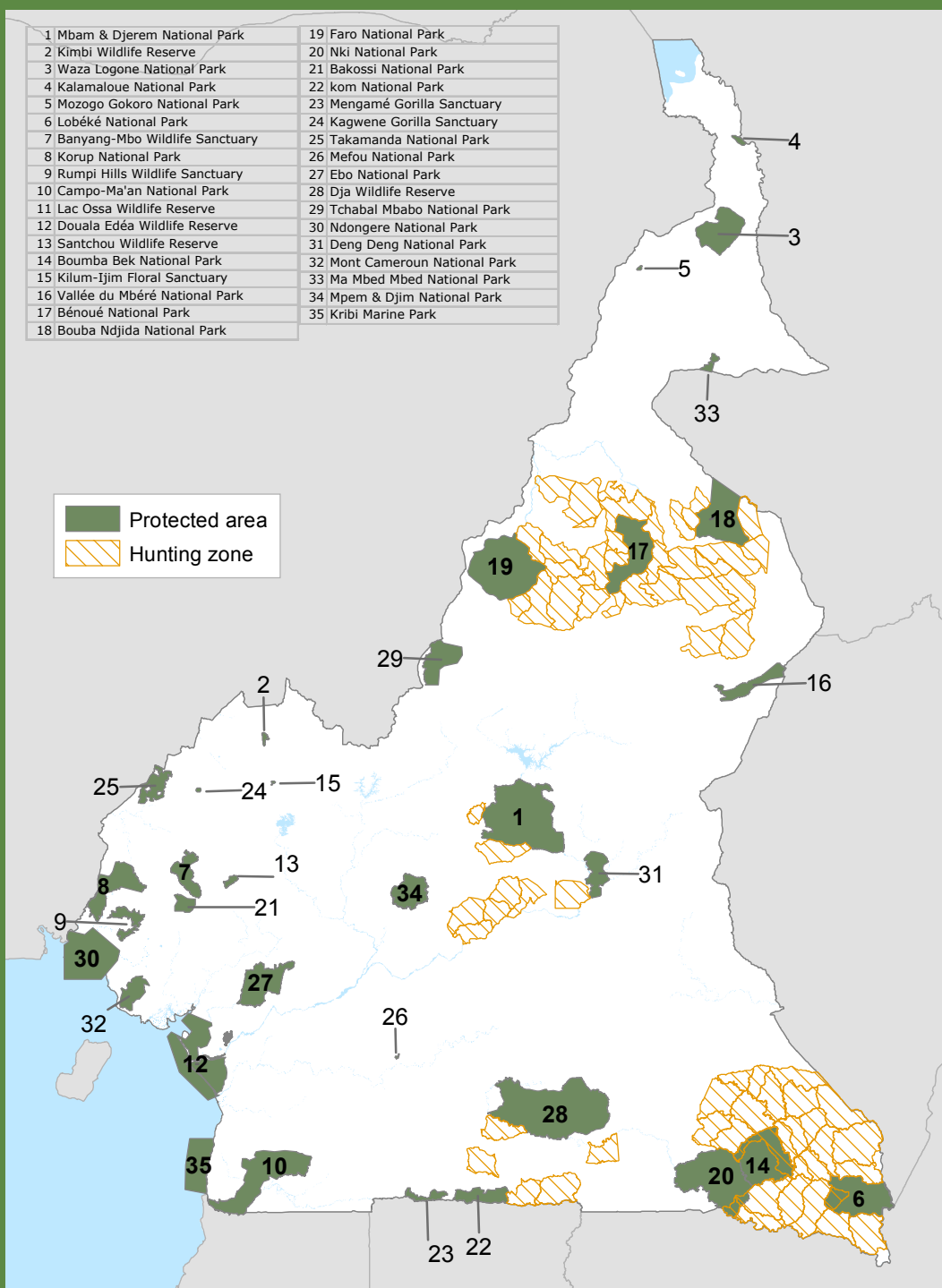
# CAMEROON'S FOREST ESTATE

## August 2012

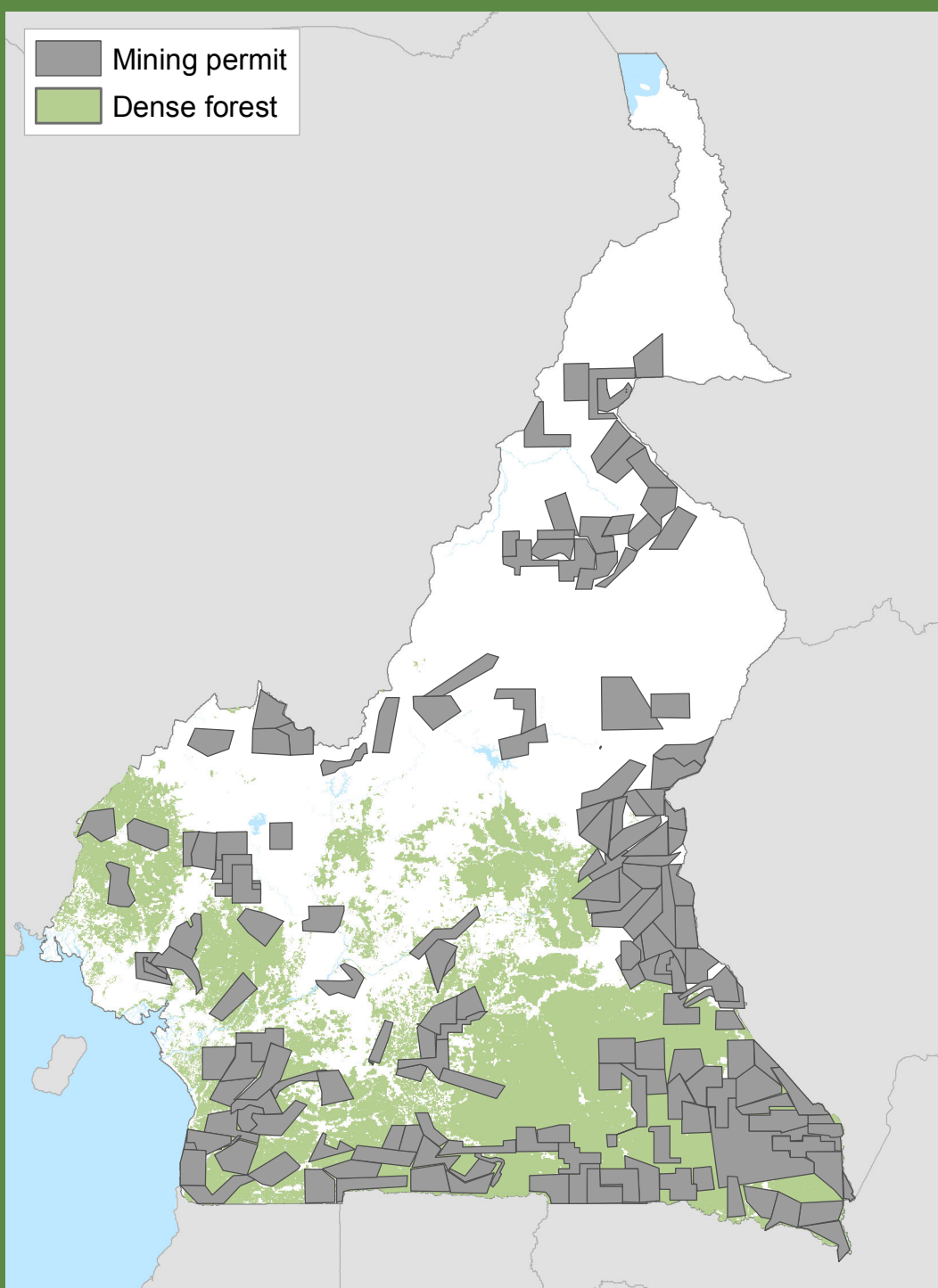


WORLD  
RESOURCES  
INSTITUTE

### PROTECTED AREAS AND HUNTING ZONES



### MINERAL EXPLORATION PERMITS



#### DATA AND MAP PRODUCTION

The data used for the production of this map have been assembled by a team composed of personnel from the World Resources Institute (WRI), the Ministry of Forestry and Wildlife (MINFOW) and other partners, including the Centre Technique de Forêt Communale (CTFC) and GTZ-ProPSFE. Rainforest Alliance (RA) actively participated in the data validation process.

This map was produced by the WRI and MINFOW with the support of the United States Agency for International Development (USAID) through the Central Africa Regional Program for the Environment (CARPE).

This initiative is also supported with software contributions from ESRI and Erdas.



#### MINFOW - WRI COLLABORATION

The World Resources Institute (WRI) and the Ministry of Forestry and Wildlife of Cameroon (MINFOW) have collaborated since 2002 to build national capacity to monitor and manage forests - focusing on modern techniques of information management. The two principle objectives of this collaboration are to:

- (1) Develop an integrated and easy to access forest information management system based on standardized methods; and
- (2) Train MINFOW and forest sector NGO staff in remote sensing, geographic information systems (GIS) and information analysis, in order to strengthen monitoring, management and decision-making around allocation and use of forest resources.

Together, this information is assembled in the Interactive Forest Atlas of Cameroon - a complete cartographic database containing forest land use allocation in Cameroon. This poster represents a snapshot as of August 2012 of the Forest Estate's status from the Forest Atlas database.

Summary of Land Use allocation within the National Forest Estate in 2012					
Permanent Forest Estate (PFE)			Non Permanent Forest Estate (nPFE)		
Forest Management Unit	Number	Area(1)	Community forests	Number	Area(1)
Allocated	111	7,005,550	Reserved	11	37,021
Abandoned	100	6,169,360	Provisional convention	34	157,588
Not allocated	7	644,237	Simple management plan	60	166,594
Forest Reserves(2)	72	901,803	Final convention	237	821,421
Protected areas	35	4,570,284	Sales of Standing volume(4)	57	132,912
National Parks	25	3,607,523	Total nPFE		1,315,536
Wildlife Reserves	5	818,852			
Sanctuaries (floral and wildlife)	5	143,909			
Hunting zones (ZIC/ZICGC)(3)	71	3,333,285			
Communal Forests	34	872,857			
Total PFE		16,683,779			

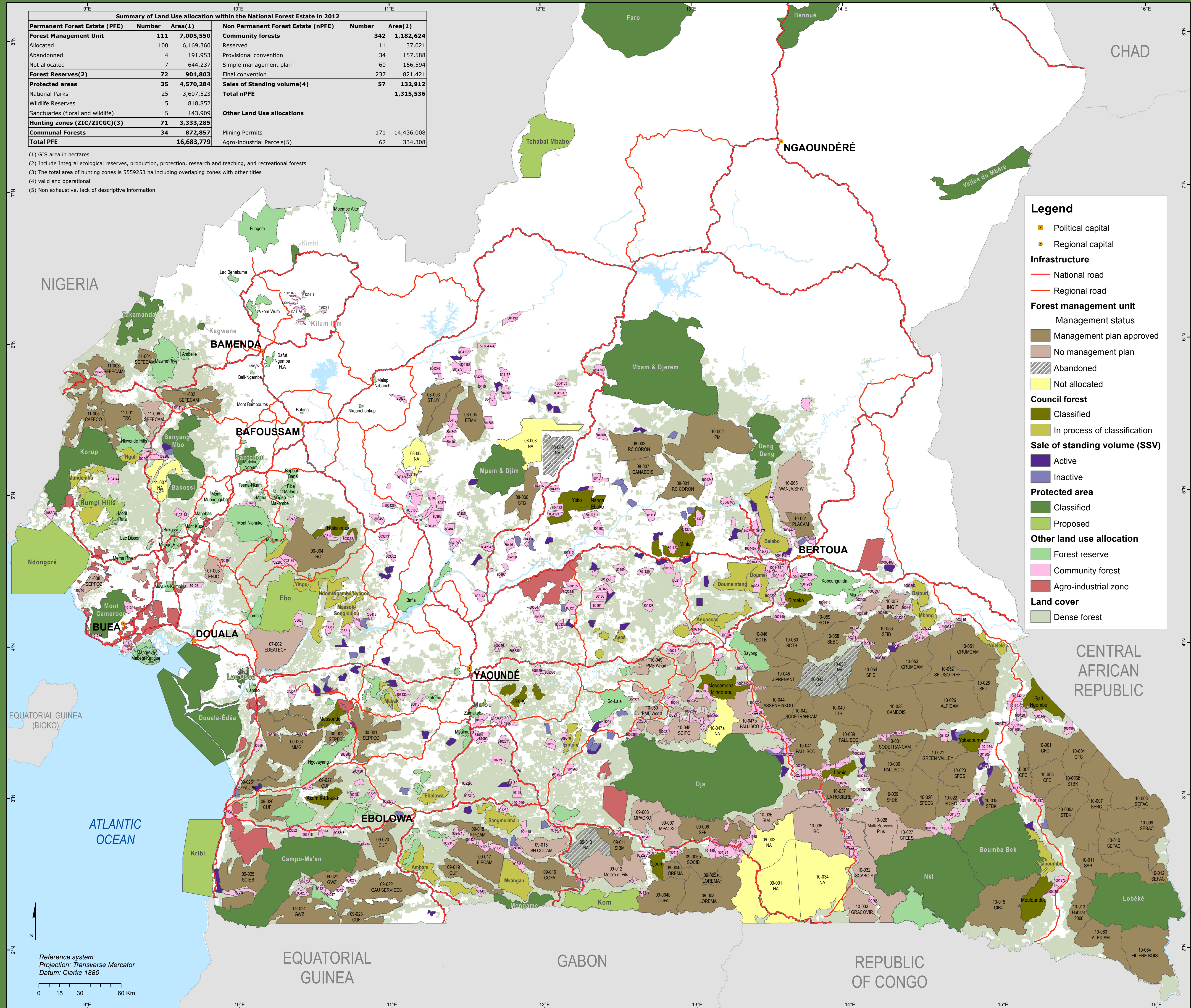
(1) GIS area in hectares

(2) Include Integral ecological reserves, production, protection, research and teaching, and recreational forests

(3) The total area of hunting zones is 5559253 ha including overlapping zones with other titles

(4) valid and operational

(5) Non exhaustive, lack of descriptive information



Reference system:  
Projection: Transverse Mercator  
Datum: Clarke 1880

0 15 30 60 Km